

# Innovation and Transformation

Shaping the Future with Strategic Prototyping Partnerships  
for Social Care and Health

**Azeus UK is offering to local authorities a Strategic Prototype Partnership as a catalyst for 'local innovation'. These partnerships bring together the skills of our international software development house with the innovation teams in local authorities to explore how technology can provide the radical change needed in the areas of social care and health.**

*"The relationship of local government with the ICT supply market has remained static since technology became an integral part of the way that local government needs to do business. The relationship is dominated by many buyers and a few large providers."*

*There is a need to change the balance so that local authorities co-ordinate and collaborate on their requirements to ensure that they take the lead role in the relationship with the ICT industry. There is a need to disrupt the market in its present format so that local government can achieve transformation, better interoperability, open systems and opportunity for collaboration."*

–National ICT Commercial Category Strategy  
for Local Government 2014



## The Aim

The aim of our Strategic Prototyping Partnership is to enable collaborative exploration of a specific area of business in either social care or health and over a

limited period of time to arrive at a working software prototype. This prototype will be a visual statement of the combined input of software designers and local authority officers. It will be either 'confirmation' that an

idea works or else be a 'look into the future'.

The project can then inform further procurement processes or be the basis for a further development partnership.

# The Project

Each project will be no longer than 3 months in duration.

The scope will be agreed between the LA and Azeus and an Azeus Business Analyst assigned.

The number of developer days offered will be between 60 and 80 depending upon the scope.

Agile development will be used with weekly communication between the project partners, thus enabling constant refinement and re-working.

# The Deliverables

The deliverables of each project may vary, but will in most cases comprise the following

- a working prototype design with either database connectivity or HTML-type wireframes
- a conceptual description of how systems integration can be achieved (if integration is the subject)
- written supporting information about the design
- an agreed Case Study about the project for publication by Azeus and the local authority.

Once the project is finished the intellectual property of each partner's input will remain solely theirs, the collaborative experience being the shared outcome and the most valuable aspect of the project.

# Technologies Available

Azeus has experience developing innovative solutions for our customers around the following technologies:

- Customer-centred portals
- Facebook login integration
- Second factor authentication
- Share, Like, Tweet with social media
- Skype integration
- Online genogram designer
- Interactive visual dashboards
- Google Map Reports
- Responsive web design (i.e. web layout adjusts to different screen resolutions used in desktop, laptop, tablet and mobile phones)
- Mobile application with online and offline facilities on iOS and Android platforms
- Open source technologies
- Integration with third party systems

# Areas of Business

The areas of business that may considered cover

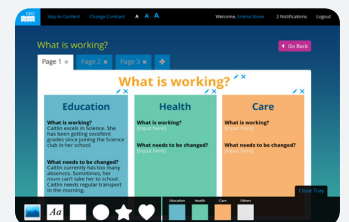
- any aspect of social care and health software development
- user experience modelling,
- mobile application design,
- web portal design
- systems integration.

The limits are governed only by what is feasible to achieve within the agreed timeframe.

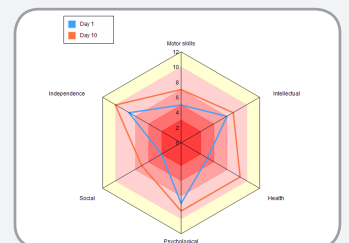
# Previous Projects

Our previous projects include:

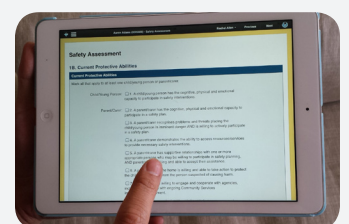
- Development of an innovative web portal design for the Special Educational Needs **Education, Health and Care plan** compilation for East Sussex County Council



- Development of a Child and **Family Risk and Resilience Assessment Tool** for Bedford Borough Council with graphical output.



- Development of a **Mobile Field Assessment** Application for New South Wales Family and Community Services



- Development of an **Electronic Life Story Book** for looked after children in New South Wales

